

Analyst View : The role of data

Presentation to 5th Transparency Workshop
Brussels



Eclipse Energy Group

John King
Robert Minsaas
23rd November 2011

The need to be able to handle data has grown

Eclipse Energy Services

| | |
|----------------------------------|----------------------|
| Charts updated | 2500 per day |
| Data points collected | 1 million per month |
| Pricing points calculated in gas | 15 million per year |
| In power | 2.5 billion per year |

Data not handled correctly leads to "overload"

- Money is spent – confusion results and time is lost
 - 1917 complaint about effects of telephone in business
- A doctor is required to know about 10, 000 diseases and 3000 drugs
 - One could spend 21hours a day just to be up to date on developments
- We are surrounded by data that needs to be analysed quickly in a volatile commercial environment

Analysis

Behaviour by individual market players and "groups" such as producers, consumers, generators are important to answer such questions as ...

- An economic downturn will reduce consumption by **xx**
- A capacity constraint will be compensated by **xx**
- A capacity constraint will lead to a price "breakout" of **xx**
- A decreased in flow **x** will lead to an increase in volume **y**
- A change in production permit leads to more volume in **x**
- An increase of **x** LNG to Zeebrugge leads to a reduction of **y** in IUK
- Is storage following demand or price signals
- Nordstream flows indicate diverted gas of **x** and new gas of **y**

We need to quantify the "x" based on facts and observations

LNG, NCS and BBL impact on IUK

What LNG is arriving in UK?

- All terminal flows in UK

Is BBL flowing into UK?

- What level?
- Above contract?
- Price signals?
- Counter nominations?

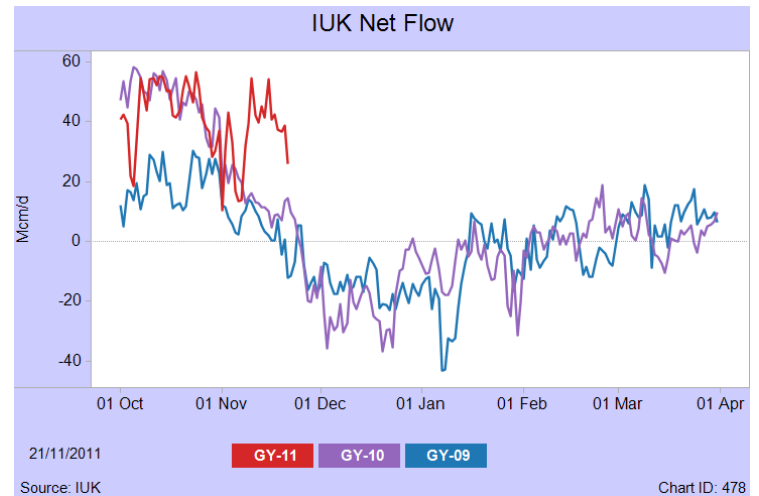
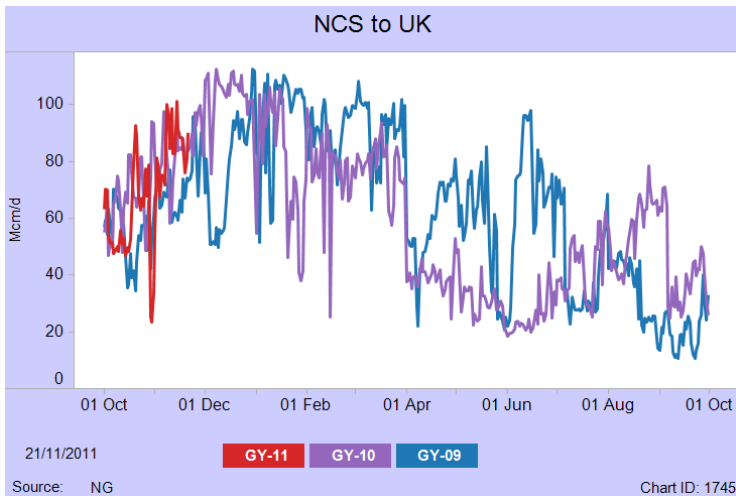
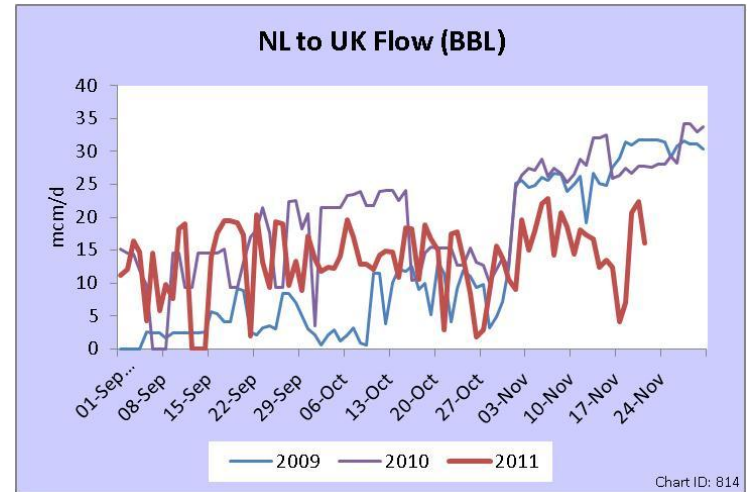
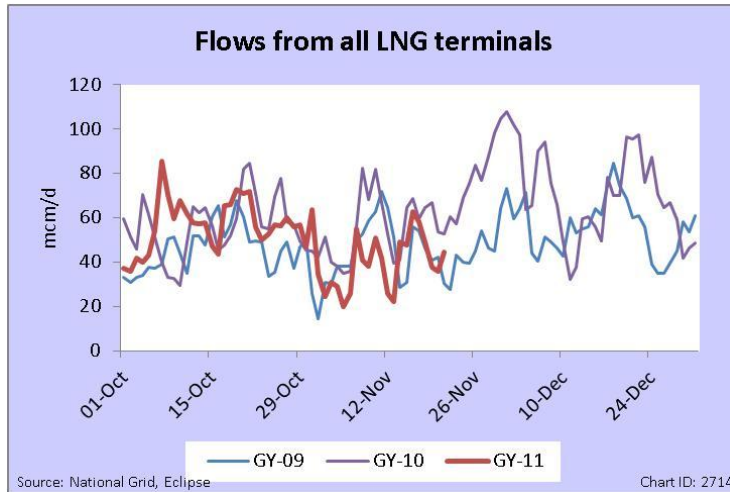
What is NCS doing into UK?

- Any spare capacity?
- What is trend?

IUK flows

- **IUK flow rate**
- **Drives UK price level**
- **Drives spread to Europe**

Charts to monitor - IUK



Demand levels in Europe

What is demand level?

- LDZ demand?
- CCGT burn?

Storage status?

- Is it withdrawing?
- Is it responding to demand or price spread (prompt-SA)?
- What is stock level?

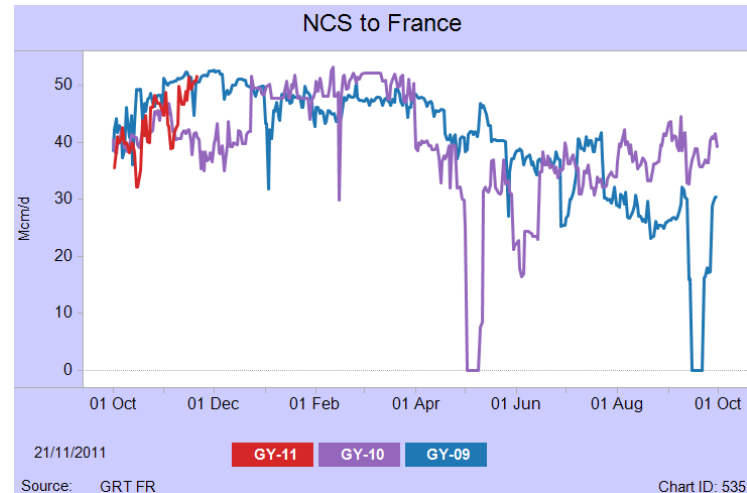
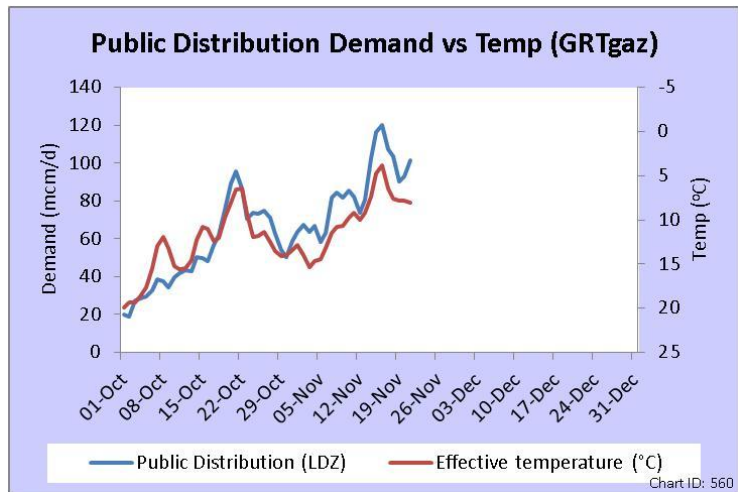
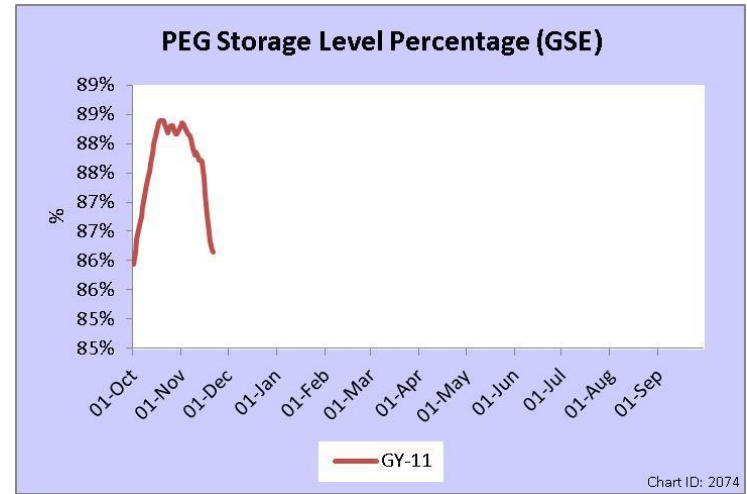
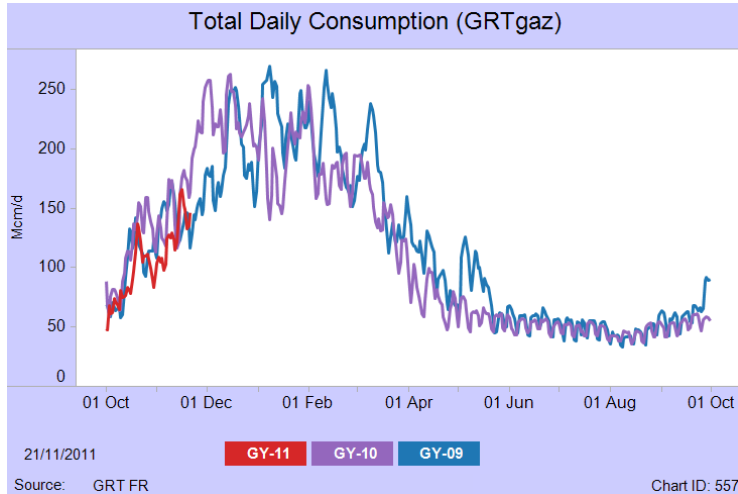
Is this temperature driven?

- What are temperatures doing?
- What is forecast

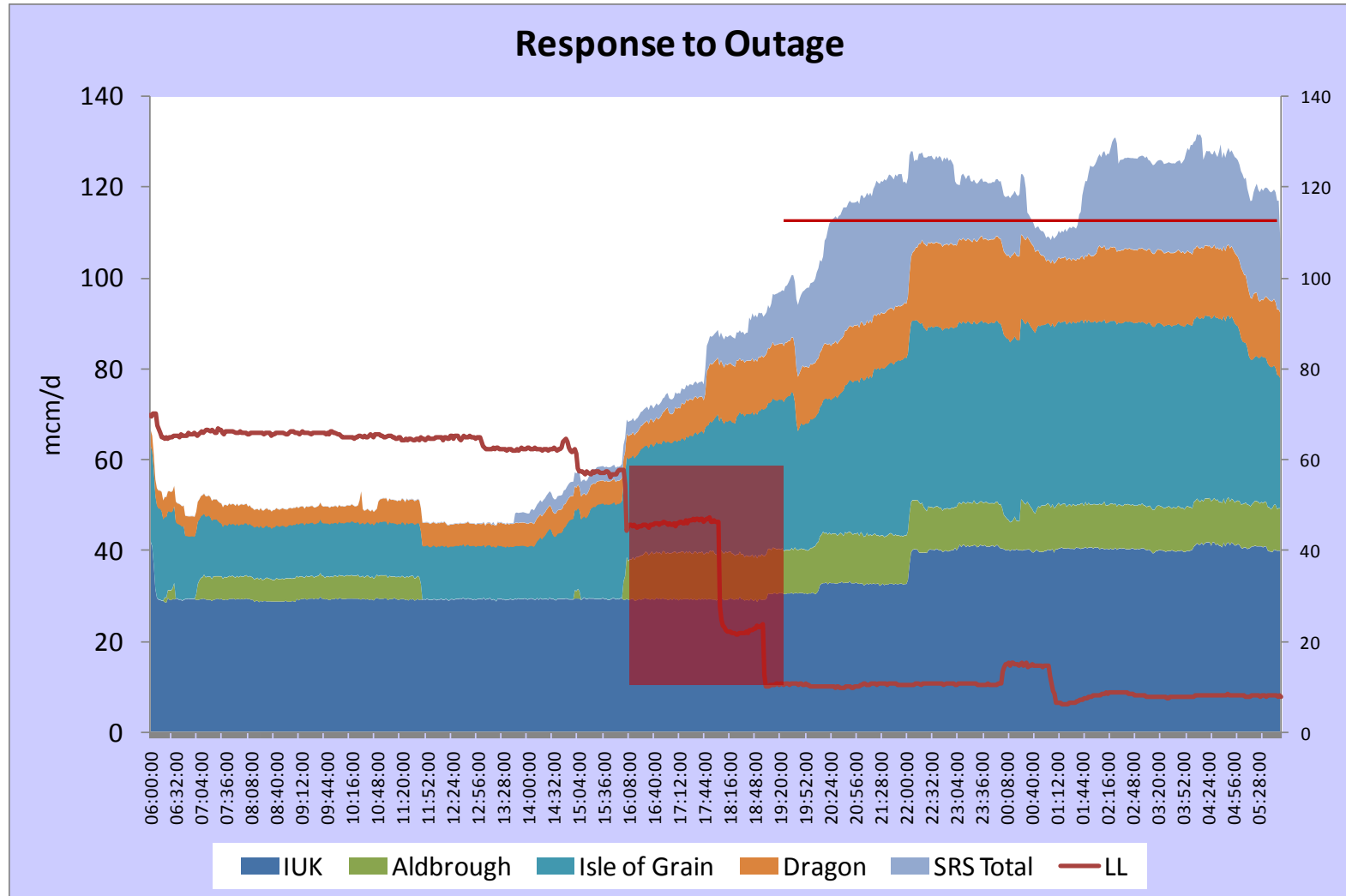
Demand led price pressure

- **Is the system stressed?**
- **Is storage comfortable?**
- **Other sources of peak supply available?**

Charts to monitor – demand (eg France)



9th January 2010 – Total response exceeds outage



To increase transparency... good collection process

- Changes in websites
 - reformatting; moving links; moving location of data;
 - changing structure of download files)
- Timeout errors – website cannot take the load/demand?
- Security/password protection inhibits access
- Delayed/late publishing of data
- Expiring data
 - available for 1 day only!

To increase transparency... good data

Changing historic data;

- temporarily disappears

- difficult to ensure data is accurate and up to date

- non consistent changes – related data does not change consistently

Not enough technical explanation of precisely what the data are

- For example Allocated vs Flows

Some data is missing at borders/landing points

Eclipse

Experience from energy industry

Track record - forecast outperforms market

Online analytics platform for customers

Gas and power - short term and long term

Customers represent at least 80% of gas traded or transported in Europe

Norway



London



Singapore

